



SPIF2021
SCIENCEPARK INNOFAIR

www.spif2021.com

SPIF2021 **SCIENCEPARK** **INNOFAIR 2021**

October 12-13 / HYBRID EVENT
Onsite : EXCO, Daegu, Korea

HOST |



DAEGU
METROPOLITAN CITY



GYEONGSANGBUK-DO



Asian Science Park Association

ORGANIZER | Asian Science Park Association Secretariat

SPONSOR |





MESSAGE FROM ASPA PRESIDENT



We cordially invite you to SCIENCEPARK INNOFAIR 2021, a hybrid event which will take place in EXCO (Daegu Exhibition & Convention Center), Daegu, Korea and online from October 12 to 13, 2021 due to the concerns over the COVID-19 pandemic.

SCIENCEPARK INNOFAIR 2021 is a new regional cooperation activity of ASPA. It is our pleasure to gather together leading organizations on technology innovation, such as Science & Technology Parks, Research Parks, Techno Parks, Enterprises, and Universities from all parts of the world to have in-depth discussions and practical cooperation through the event.

The 1st SCIENCEPARK INNOFAIR will be held under the theme 'The Role and Cooperation of Science & Technology Parks for Regional Development' and consisting various programs such as Sciencepark Forum, Online Exhibition, Business Meeting, etc. In Sciencepark Forum, a number of global Science & Technology Parks will exchange their view on the practice of international cooperation between Science & Technology Parks, policy of nurturing local companies, support for technology and organizational development, and measures for strengthening innovation capabilities. Also, outstanding small and medium sized venture companies nurtured in Science & Technology Parks from more than 15 countries in Pan-Asia region will participate in Online Exhibition and Technology-Business Meeting.

ASPA is seeking ways to strengthen mutual understanding and a sense of community through exchange and cooperation among regions. We hope participants of the SCIENCEPARK INNOFAIR 2021 can benefit significantly via open discussion, practical schemes centered on Science and Technology Parks, and common objective to enhance cooperation.

Kindly thank you for your attention and support for SCIENCEPARK INNOFAIR 2021.



Wayne Wang

Chair, Organizing Committee of SCIENCEPARK INNOFAIR 2021
President, Asian Science Park Association(ASPA)
Director General, Hsinchu Science Park Bureau, Ministry of Science and Technology



SCIENCEPARK INNOFAIR 2021

SCIENCEPARK INNOFAIR 2021 is a special opportunity for networking with colleagues from all over the world and for creating cooperation and business through the exhibition of products and high technologies. SCIENCEPARK INNOFAIR 2021 is a fascinating opportunity for all participants to share the experience of start-ups and venture companies through the presentation of promising global growth enterprises. SCIENCEPARK INNOFAIR 2021 is held in conjunction with the 14th ASPA LEADERS Meeting

OFFICIAL WEBSITE

www.spif2021.com

WHAT IS ASPA?

ASPA is an international nongovernmental organization established in Japan in 1997 for the purpose of accomplishing the joint development in the fields of scientific technology, industry and economy in the Asian region.

ASPA has been trying to present a new paradigm for Asian industry and build economic consensus in Asia by bringing innovative organizations, companies and individuals together that make contributions to industrial and economic development in their societies.

The efforts to achieve these goals include holding international events which and boost exchanges of experience, knowledge and various projects and share industrial and economic resources through the expanding network.



VISION

"A Leading Institution for Knowledge Sharing and Technology Exchange in Asia"

We realized there have been many hardships in the fields of industry and economy such as cultural differences, harsh competitions, different religion/nationality and other historical factors.

ASPA has tried to overcome all these obstacles as the leading network of industrial technology in Asia and contribute to build on Asian community by exchanging technology beyond national borders.

MISSION

- To improve mutual cooperation through "Local to Local" exchanges
- To induce joint development in Asia through interchanges of technology and regional innovation.
- To inform one Asian community by exchanging information in the fields of industry, technology, culture and education

SPIF2021 SCIENCEPARK INNOFAIR 2021



SPIF2021
SCIENCEPARK INNOFAIR

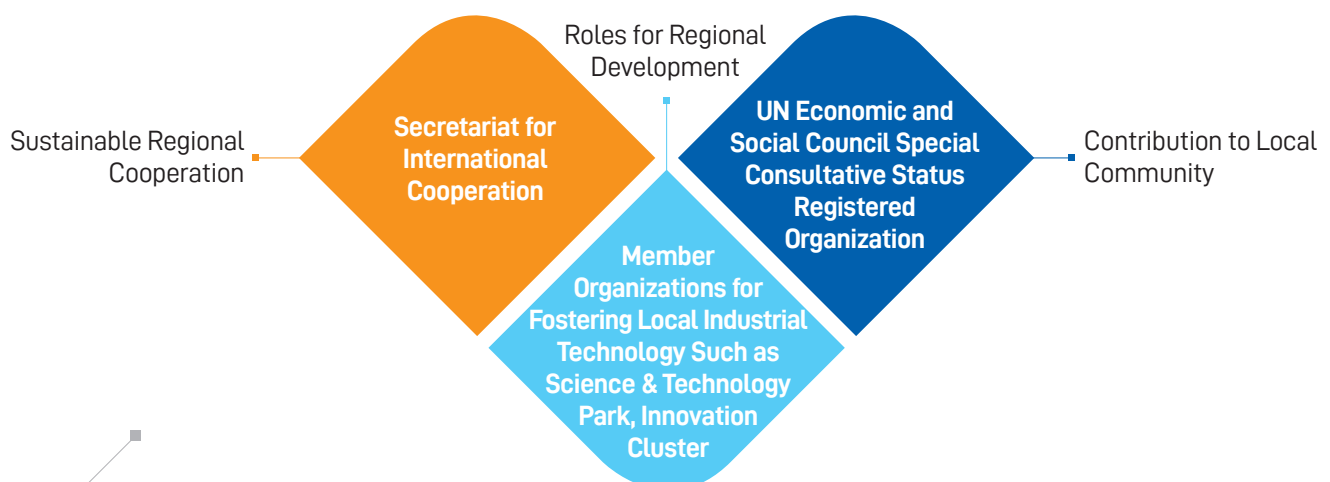
SCIENCEPARK INNOFAIR 2021 OVERVIEW

DATE	October 12(Tue) - 13(Wed), 2021
VENUE	EXCO/ Daegu, KOREA HYBRID EVENT
THEME	The Role and Cooperation of Science & Technology Parks for Regional Development
OFFICIAL WEB-SITE	www.spif2021.com
HOST	Daegu Metropolitan City, Gyeongsangbuk-do, Asian Science Park Association (ASPA)
ORGANIZER	ASPA Secretariat
SPONSOR	Korea Tourism Organization, The Korean Association of Professional Convention Organizers

Participants

Science & Technology Park, Innovation Cluster, Excellent Growing Company, University and Experts

SCIENCEPARK INNOFAIR Based on ASPA's Purpose and Role

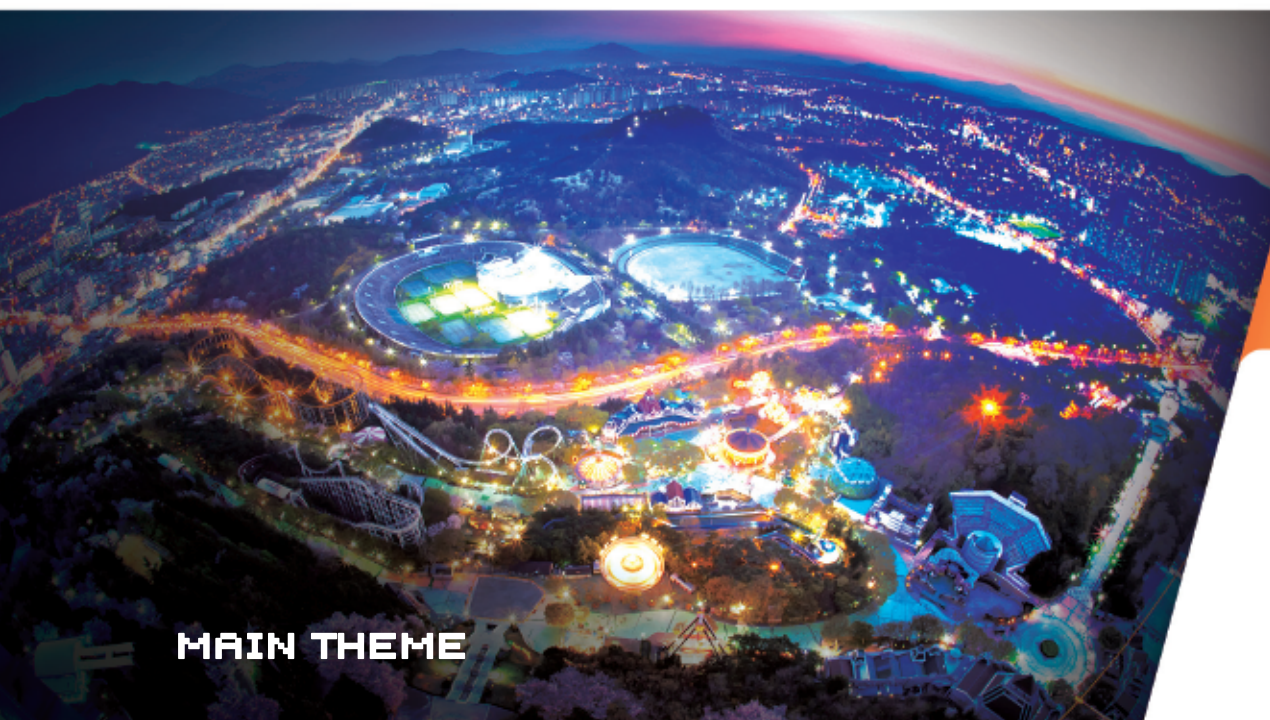


MORE CONNECTIONS, BETTER TOMORROW

PROGRAM AT A GLANCE

	Venue		EXCO Grand Ballroom B	EXCO Grand Ballroom A	Room 314
October 12 (Tue)	9:00-11:00	120'	Registration		
	11:00-12:30	90'	Innovation Talk to You LIVE KOR	Online Exhibition & Online Technology · Business Meeting	
	12:30-14:00	90'	Break		
	14:00-14:30	30'	Opening Ceremony LIVE KOR LIVE ENG		SPECIAL SESSION The future of Science and Technology Parks in Digital Transformation Age (14:30 - 16:30)
	14:30-15:20	50'	SESSION 1 LEADERS Round Table Meeting LIVE KOR LIVE ENG		
	15:20-15:30	10'	Break		
	15:30-16:55	85'	SESSION 2 Cooperation between Science & Technology Parks LIVE KOR LIVE ENG		
	16:55-18:20	85'	SESSION 3 The Role of Advanced STPs for Emerging STPs LIVE KOR LIVE ENG		
	18:20-18:30	10'	Break	-	
	18:30-	-	Gala Dinner		
October 13 (Wed)	09:00-10:00	60'	-	Registration	-
	10:00-17:00	420'	-	Online Exhibition & Online Technology · Business Meeting	VOD SESSION <div> SESSION 4 Business Environment in Asia VOD </div> <div> BUSINESS SESSION Business and Technology Development Strategy of Companies in Asia VOD </div>

※ This Program is subject to change.



MAIN THEME

Sciencepark Forum

1 LEADERS Round Table Meeting

We will discuss various issues such as activities to enhance exchange and cooperation and plans to encourage diverse participants that lead regional innovation such as technoparks, clusters, and colleges to join ASPA's activities among science & technology park leaders in Asian countries. In addition, we will discuss how to improve cooperation among members through the Secretariat.

2 Cooperation between Science & Technology Parks

We will review strategies and cases of science & technology parks for cooperation between regions and mutual development of regions, and elements that encourage and activate regional cooperation through networking in science & technology parks.

3 The Role of Advanced Science & Technology Parks for Emerging Science & Technology Parks

We will look at the role of the existing science & technology parks for the policies of science & technology parks being planned and created in various ways in Asian countries. In addition, we will discuss diverse issues such as policies that nurturing companies may face in developing a science & technology park, support of technical development, and organizational development and innovation capacity improvement. Furthermore, we will formulate policies to establish scienceparks by giving support.

4 Business Environment in Asia

The science & technology park of each country gives mentoring services to small- and medium-sized venture companies by nation, business field, and growth step. In addition, this opportunity will give companies that want to enter a national science & technology park support details and support information of the corresponding region.



Innovation Talk to You

1 New Challenges, Lessons from Hardships

We will promote a talk show with subjects that audiences can easily share such as the trials and the strategies for overcoming challenges that may occur for college students, people who prepare start-ups, entrepreneurs, and the general public. We will organize a talk show with celebrities in various fields to improve the challenge spirit of participants and others by communicating with audiences.

Support for Participating Companies

1 Online Exhibition and Online Technology · Business Meeting

We will make sure to support promising and growing venture companies recommended by science & technology parks overcome the limited situation in overseas marketing activities of local SMEs due to the prolongation of Corona-19 by holding online exhibition and business meeting for stable export through SPIF 2021. Particularly, we will focus on energy, health/medical devices, bio, machinery and ICT fields in order to raise suitability of business matching.

2 Business and Technology Development Strategy of Companies in Asia

We will classify participating companies into nation, business field, and growth step to give diverse information such as global business information on sector, technical development strategies, and the business environment of an interested region to companies that show their interest in information at home and abroad for their global business.

MAIN BUSINESS IN DAEGU-GYEONGBUK

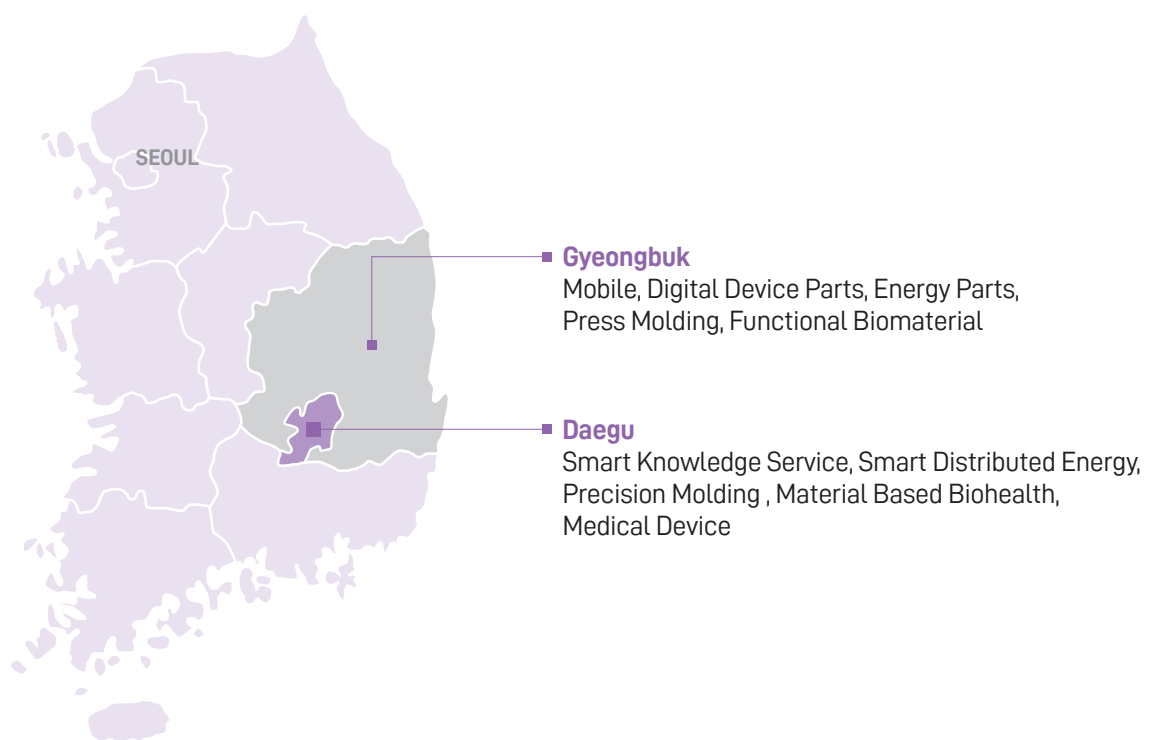
Daegu Metropolitan City and Gyeongsangbuk-do support the following core industries that can create added value and employment in the region and contribute to the revitalization of the local economy.

DAEGU METROPOLITAN CITY Knowledge Service, Smart Energy, Precision Molding, Biohealth and Medical Devices

GYEONGSANGBUK-DO Mobile, Digital Device Parts, Energy Parts, Press Molding and Biomaterial

Daegu Metropolitan City and Gyeongsangbuk-do are also working together to foster automotive convergence parts, intelligent machinery and high-tech textile industries.

	Daegu Metropolitan City	Gyeongsangbuk-do
POPULATION	2.5 million	2.7 million
SIZE (Km²)	884 Km ²	19,028 Km ²
ECONOMIC GROWTH RATE (5years average)	2.30%	2.00%
NUMBER OF SMES	198,000	206,000
NUMBER OF SMES EMPLOYEES	722,000	746,000
EXPORT	4.3 billion USD	5.5 billion USD
NUMBER OF VENTURE COMPANY	1,622	1,729



TOURIST ATTRACTIONS

Daegu, a perfect place to experience the essence of Korean traditional culture!

The city of Daegu is the center of traditional Korean culture with over thousand years of history. Located at the center of the three Kingdoms of Korea(Goguryeo, Baekje, and Shilla), the city of Daegu and the surrounding areas possess rich history and an abundance of cultural heritage sites. The cities are filled with cultural relics and UNESCO World Cultural Heritage Sites. With a excellent transportation network linked in all directions, it is a point leading to numerous cultural heritage sites and tourist attractions which displays Korean culture.



Hahoe Folk Village



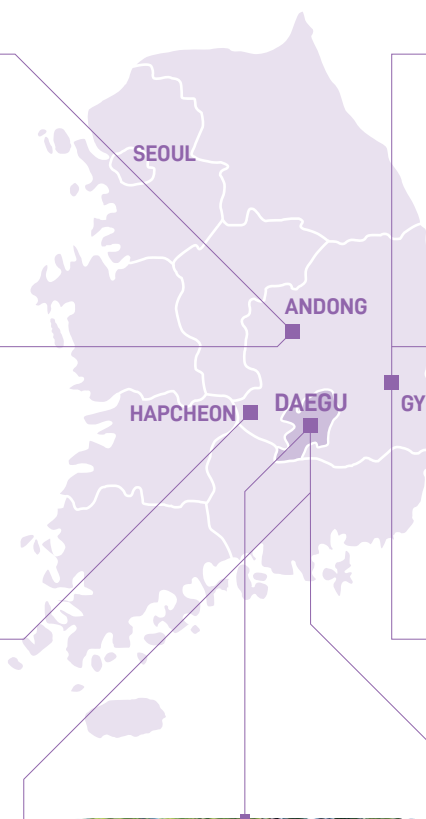
Woryeonggyo Bridge



Haeinsa Temple



Songhae Park / Ok Yeon Lake



Bulguksa Temple



Donggung palace and wolji pond



Yangdong Folk Village



Dalseong Dodong-seowon



Modern alleyway tour

VENUE & ACCOMMODATION

Daegu, a perfect place to experience the essence of Korean traditional culture!

The city of Daegu is the center of traditional Korean culture with over thousand years of history. Located at the center of the three Kingdoms of Korea(Goguryeo, Baekje, and Shilla), the city of Daegu and the surrounding areas possess rich history and an abundance of cultural heritage sites. The cities are filled with cultural relics and UNESCO World Cultural Heritage Sites. With a excellent transportation network linked in all directions, it is a point leading to numerous cultural heritage sites and tourist attractions which displays Korean culture.

VENUE

EXCO

EXCO(Daegu Exhibition & Convention Center) is a cutting edge convention and exhibition facility based on intelligent Building Systems'(IBS) architectural technologies.

Every room is equipped with superb lighting facilities, sound equipment, a simultaneous translation system, and A/V equipment-ensuring that we meet all requirements during the TCI Conference.

Strategically located in the heart of the Daegu Distribution Complex, EXCO offers easy access to Daegu International Airport, major highways, and the train station from which visitors can catch Korea's superb high-speed train the KTX



ACCOMODATION

THE GRAND HOTEL

The Grand Daegu Hotel is located in Beomeo-Dong, which is at the heart of Daegu's transportation networks and business operations. With our luxurious interior and high-tech conveniences, we are proud to be the best and the biggest hotel in Daegu. The hotel features 150 guest rooms, a Korean-Japanese restaurant, a Chinese restaurant, a buffet, saunas for men and women, a fitness center, and catering halls for various occasions.

We strive to be the leading tourist and business hotel in Daegu city, Kyongbuk district, by providing superb service and exquisite cuisine. We are also internationally renowned for our excellence and prestige.



INTER-BURGO EXCO HOTEL

HOTEL INTER-BURGO DAEGU became the 5 star hotel for the first time in Daegu in 2001. Being located in Manwoo park, it is surrounded by the beautiful nature and features 322 rooms, convention hall which is suitable for any international event and the latest pipe organ(51stops). It gives pride to residents in Daegu, and it is so loved that both past and present presidents stayed in the hotel. To be not the world best, but the world most respectable hotel, it services its visitors with all sincereness.



TOYOKO-INN

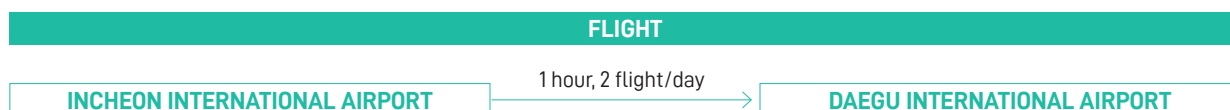
Toyoko-Inn Daegu Dongsong-ro is a 5-minute walk from Exit 12 of Banwoldang Station on Line 2. Also, Gyeongbu Line KTX Dongdaegu Station is a 20-minute drive away and Daegu International Airport is a 30-minute drive away. Nearby attractions include Duryu Park, E-world, and EXCO, which are a 20-minute drive away. Toyoko-Inn offers clean and comfortable rooms at reasonable rates. Enjoy warm-hearted Japanese service and a pleasant stay at our modern hotels.



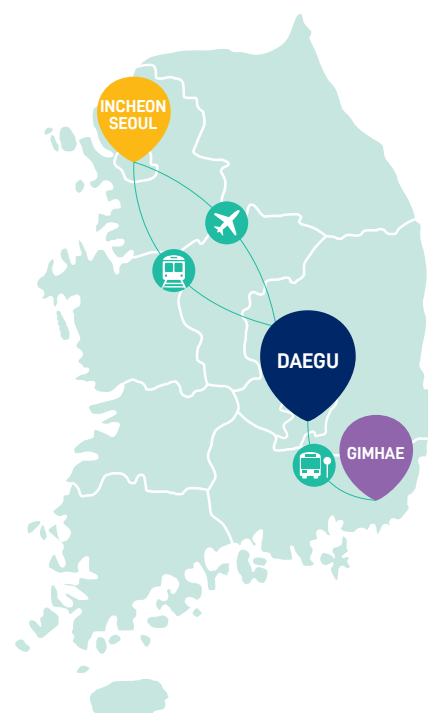
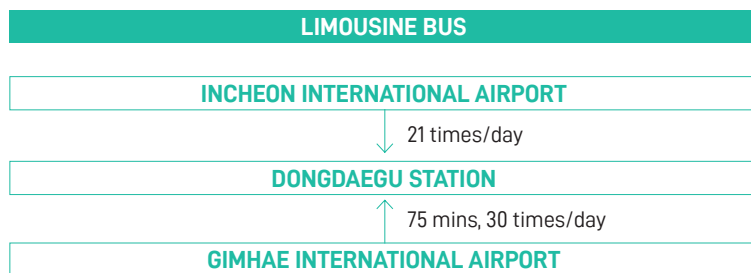
TRAVEL TO DAEGU

Convenient and Easy Access

Korea can be reached from just about every major city in the world, either through direct flights or by connecting flights at any major East Asian cities. Korea's excellent transportation network, which includes domestic airlines, highways and rail service, will make sure that all participants of SCIENCEPARK INNOFAIR 2021 arrive on time. Located at the center of the southeast region of the Korean Peninsula, Daegu is about 300km southeast of Seoul. From Seoul Station, visitors can easily take the KTX(Korea Train Express) to Daegu.



- INCHEON | 54 Countries, 180 Cities with 84 Airlines of direct lines
- GIMHAE | 12 Countries, 41 Cities with 21 Airlines of direct lines
- DAEGU | 6 Countries, 17 Cities with 6 Airlines of direct lines



SPIF2021
SCIENCEPARK INNOFAIR



SPIF2021 **SCIENCEPARK** **INNOFAIR 2021**

October 12-13 / HYBRID EVENT

Onsite : EXCO, Daegu, Korea

WEBSITE www.spif2021.com **E-MAIL** info.spif2021@gmail.com

ASIAN SCIENCE PARK ASSOCIATION SECRETARIAT

2F Daegu Knowledge Service Center, 481, Dongdaegu-ro,
Dong-gu, Daegu, 41256, Republic of Korea

TEL +82 53 218 4103

FAX +82 53 218 4108

WEBSITE www.cyberaspa.org

E-MAIL aspa@cyberaspa.org