

Your partner for

Steel & Metal Business

Processing & Delivering Coils | Sheets | System line

CONTENTS

1. COMPANY OVERVIEW

3. PRODUCTS

5. CUSTOMERS

2. PROCESSING /
LINE

4. QUALITY
ASSURANCE

**DAEHONG KOSTECH
CO., LTD.**

1. COMPANY OVERVIEW

- Who we are
- History
- Where we are

2. PROCESSING / LINE

- Input/ Output
- Facility system
- Professional Service

3. PRODUCTS

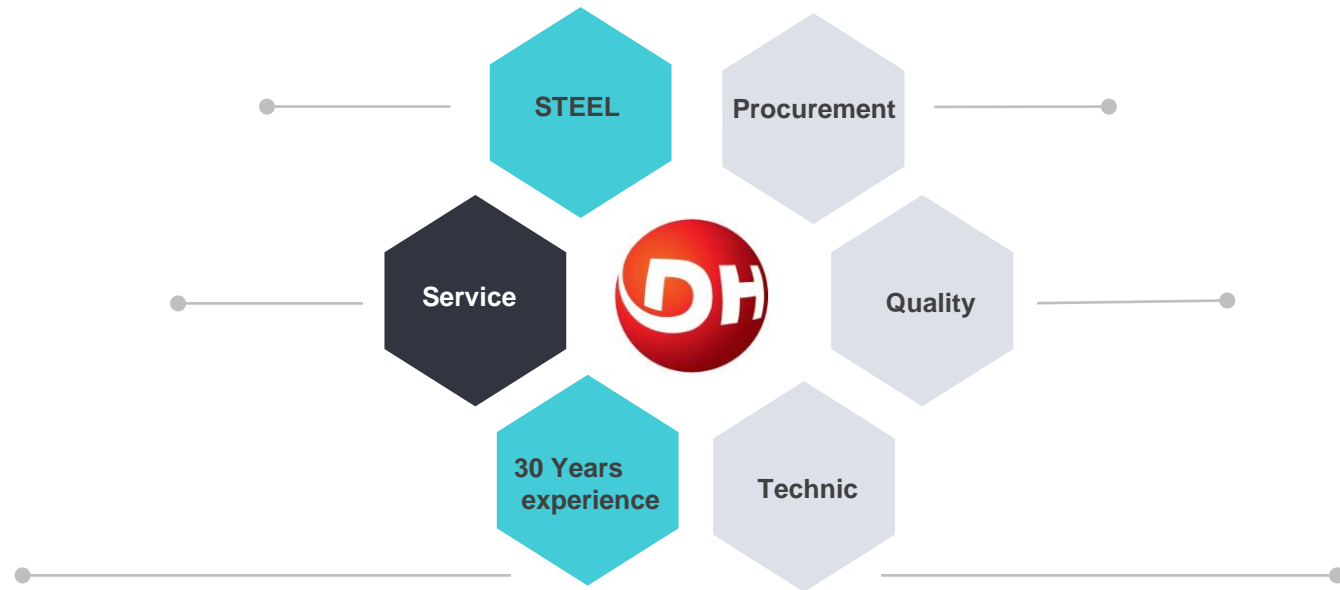
- HR/PO/CR
- GI/EGI/GA/PPGI
- Special steel
- STS/AL
- Round Bar (New)

4. QUALITY ASSURANCE

5. CUSTOMERS

WHO WE ARE

We are global specialists for **STEEL & METAL** solutions.



Advising solutions for a comprehensive range of steel & metal issues, including procurement, quality and technical matters and contributing to enhance our customer's competitiveness to ensure co-growth and co-prosperity.

We are constantly engaging in learning of and researching the purchasing competitiveness, logistics system, production technology, and material characteristics.

Serving our customer towards their viewpoint and perspective.

1. COMPANY OVERVIEW

- Who we are
- History
- Where we are

2. PROCESSING / LINE

- Input/ Output
- Facility system
- Professional Service

3. PRODUCTS

- HR/PO/CR
- GI/EGI/GA/PPGI
- Special steel
- STS/AL
- Round Bar (New)

4. QUALITY ASSURANCE

5. CUSTOMERS

HISTORY

2005. ISO 9001 & ISO 14001

2006. Unit2 mid-sized Cold rolling mill

2007. An official Postil(Posco Branch) coil center

2008. INNOBIZ certificate for a venture company
Operated R&D center

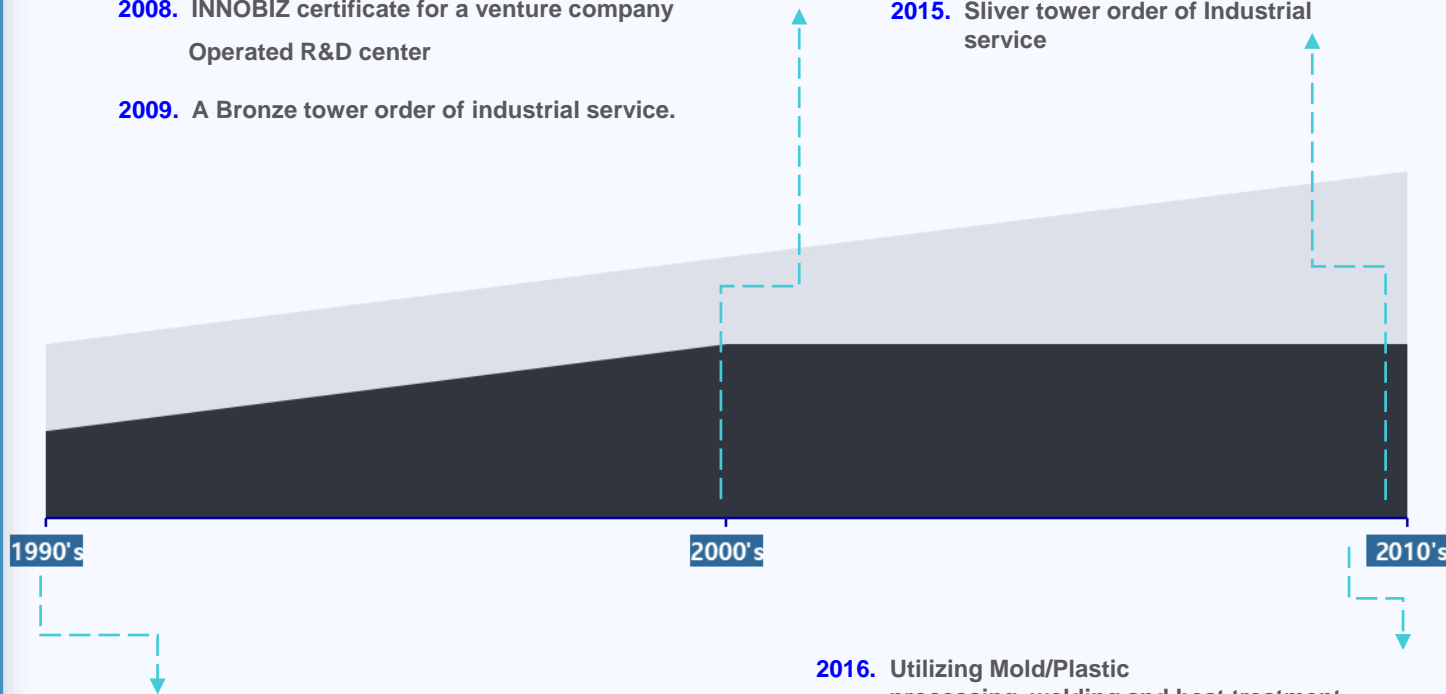
2009. A Bronze tower order of industrial service.



2011. Unit3 mid-sized Cold rolling mill
in 2ND factory (dal-seong)

2013. Silver Prize in National competition
on Learning organization performance

2015. Silver tower order of Industrial
service



1992. Establishment, turned into incorp. by 1997.

1998. Mid-sized slitter & Cold rolling mill

1999. An official local dealer of Dongbu steel.

2016. Utilizing Mold/Plastic
processing, welding and heat treatment

2017. Family-friendly business site.

2019. India office in Bengaluru.

2020. The 3rd factory in Dang-jin

1. COMPANY OVERVIEW

- Who we are
- History
- Where we are

2. PROCESSING / LINE

- Input/ Output
- Facility system
- Professional Service

3. PRODUCTS

- HR/PO/CR
- GI/EGI/GA/PPGI
- Special steel
- STS/AL
- Round Bar (New)

4. QUALITY ASSURANCE

5. CUSTOMERS

WHERE WE ARE

1. KOREA (FACTORY)

HEAD OFFICE/FACTORY



► Address

571 Dalseodaero, Dalseo-gu,
Daegu, Korea

► Present state of facilities

- 1) 4Hi-Rolling Mill Line No.1
- 2) 4Hi-Rolling Mill Line No.2
- 3) Slitter Line

2ND FACTORY



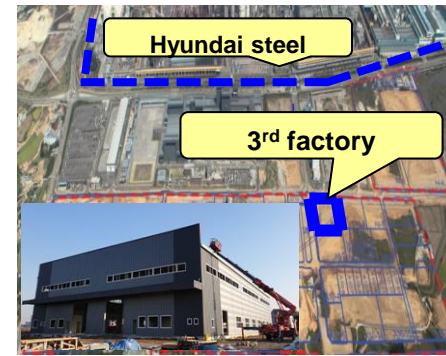
► Address

29, Dalseong2cha 6-ro,
Guji-myeon, Dalseong-gun,
Daegu, Korea

► Present state of facilities

Heating Process Line

3RD FACTORY



► Address (Completed by 2020.May)

445, Donggok-ri, Songsan-myeon, Dangjin-si,
Chungcheongnam-do, Korea

► Plan to invest on facilities

- 1) Rolling Mill Line
- 2) Slitter Line
- 3) Shearing Line

Contact : +82-53-583-2089
export@daehongkst.com

1. COMPANY OVERVIEW

- Who we are
- History
- Where we are

2. PROCESSING / LINE

- Input/ Output
- Facility system
- Professional Service

3. PRODUCTS

- HR/PO/CR
- GI/EGI/GA/PPGI
- Special steel
- STS/AL
- Round Bar (New)

4. QUALITY ASSURANCE

5. CUSTOMERS

WHERE WE ARE

2. INIDA (OFFICE)



► **Bengaluru** : NO. 152, RK Complex, 2nd F, KHB colony, 5th block Koramangala, Bengaluru, Karnataka, 560095

► **Delhi** : 8th Floor, Building No- 8, Tower C, DLF Cyber City, Phase -2, Sector -24 Gurugram, Haryana -122010

1. COMPANY OVERVIEW

- Who we are
- History
- Where we are

2. PROCESSING / LINE

- Input/ Output
- Facility system
- Professional Service

3. PRODUCTS

- HR/PO/CR
- GI/EGI/GA/PPGI
- Special steel
- STS/AL
- Round Bar (New)

4. QUALITY ASSURANCE

5. CUSTOMERS

INPUT / OUTPUT

Supplier



posco



HYUNDAI
STEEL



Input



Process



Output



1. COMPANY OVERVIEW

- Who we are
- History
- Where we are

2. PROCESSING / LINE

- Input/ Output
- Facility system
- Professional Service

3. PRODUCTS

- HR/PO/CR
- GI/EGI/GA/PPGI
- Special steel
- STS/AL
- Round Bar (New)

4. QUALITY ASSURANCE

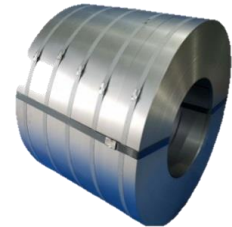
5. CUSTOMERS

PRODUCTS



Hot Rolled Steel

- SS400, SS490, SS540
- SM400A, B, C
- SM490A, B, C
- SM490YA, YB



Cold Rolled Steel

- SPCC, SPCD, SPCE
- 1/8H, 1/4H, 1/2H, HB



Pickled & Oiled Steel

- SPHC, SPHD, SPHE



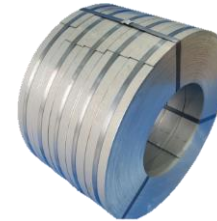
Galvanized / Galvannealed Steel

- SGCC, SGCD
- SGCD1~3, SGC340~570
- SGARC340, 440
- SG AFC590



Electronic Galvanized Steel

- SECC, SECD, SECE, SECEN
- SEFC340, SEFC390
- SECVD



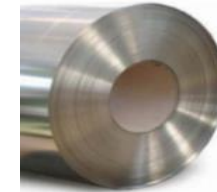
Advanced High Strength Steel

- SAPH310, 370, 400, 440
- SAFH590, 540, 590



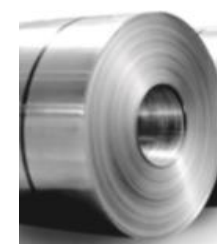
Special Steel

- SK2 ~ SK5
- S30C ~ S55C
- SCM415, SCM435
- SNCM220



Aluminum Steel

- 1050, 1070, 1080
- 3003, 3004, 3005, 3105
- 5005, 5052, 5056, 5083



Stainless Steel

- 304, 304L, 316, 316L
- 430, 439, 439L



Round Bar

- SS400, S45C
- SCM415(H)
- 44MNSIVS6, SUJ2, SAE10B38M2

1. COMPANY OVERVIEW

- Who we are
- History
- Where we are

2. PROCESSING / LINE

- Input/ Output
- Facility system
- Professional Service

3. PRODUCTS

- HR/PO/CR
- GI/EGI/GA/PPGI
- Special steel
- STS/AL
- Round Bar (New)

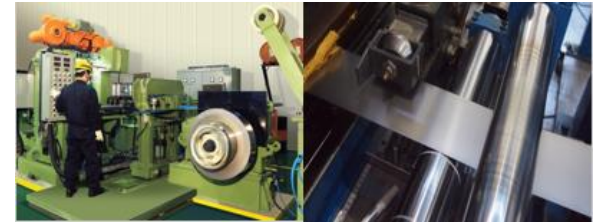
4. QUALITY ASSURANCE

5. CUSTOMERS

FACILITY SYSTEM

4Hi-Rolling Mill Line No.1 ★★★★★

Material : Low carbon, High carbon steel, alloy steel
Standard : Thickness 0.4T ~ 4.5T / Width 32mm ~ 400mm



4Hi-Rolling Mill Line No.2 ★★★★★

Material : Low carbon, High carbon steel, alloy steel
Standard : Thickness 0.6T ~ 6.0T / Width 80mm ~ 400mm



Slitter Line ★★★★★

Material : Low carbon, High carbon steel, alloy steel
Standard : Thickness 0.1T ~ 6.0T / Width 30mm ~ 470mm



QT Heat treatment Line ★★★★★

Material : SK3~SK5, S30C~S55C, SCM415~435
Standard : Thickness 0.6T ~ 3.2T / Width 80mm ~ 400mm



1. COMPANY OVERVIEW

- Who we are
- History
- Where we are

2. PROCESSING / LINE

- Input/ Output
- Facility system
- Professional Service

3. PRODUCTS

- HR/PO/CR
- GI/EGI/GA/PPGI
- Special steel
- STS/AL
- Round Bar (New)

4. QUALITY ASSURANCE

5. CUSTOMERS

PROFESSIONAL SERVICE

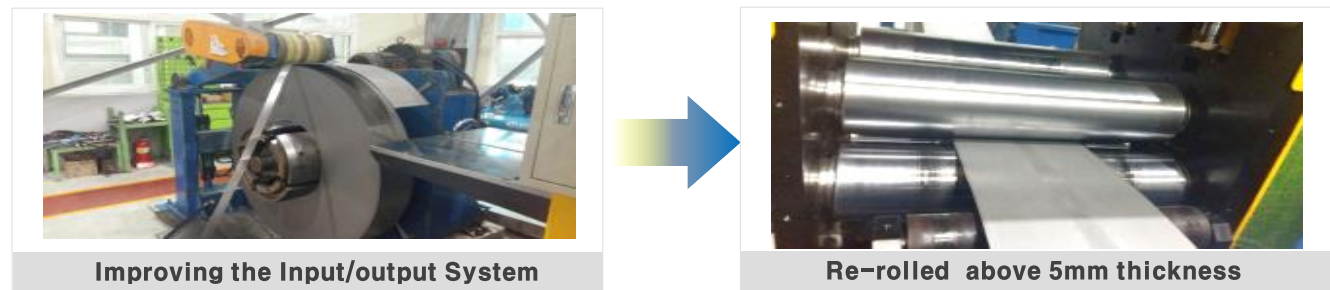
1. Precision Re-rolled technology of Hot/Cold rolled coil/plate



-> Minimize material loss and produce high-quality cold-rolled materials

-> Correspond to customer demand of material thickness: 0.2T to 7.0T

2. Precision rolled Skin Pass technology for materials over 5T



-> Less than ± 20 mm in thickness tolerance of 5T or more by adjusting the rolling roll clearance and accumulating tension.

1. COMPANY OVERVIEW

- Who we are
- History
- Where we are

2. PROCESSING / LINE

- Input/ Output
- Facility system
- Professional Service

3. PRODUCTS

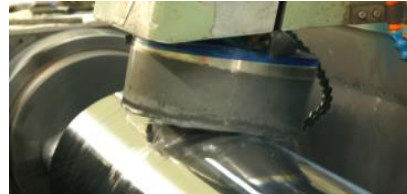
- HR/PO/CR
- GI/EGI/GA/PPGI
- Special steel
- STS/AL
- Round Bar (New)

4. QUALITY ASSURANCE

5. CUSTOMERS

PROFESSIONAL SERVICE

3. Customized Roughness Management Technology



Rolling management



Thickness measurement



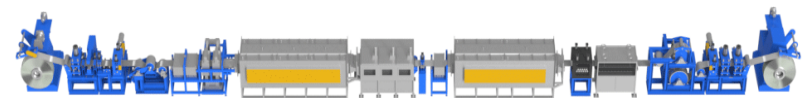
Surface measurement

-> Control of rolling and processing by skilled engineer

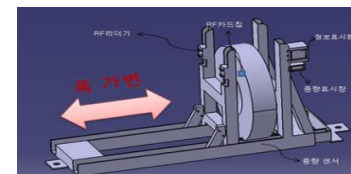
-> Securing technology for **thickness and surface roughness implementation** required by customers

4. Facilities Development

QT heat treatment part



Metal/Steel Plate related devices part



1. COMPANY OVERVIEW

- Who we are
- History
- Where we are

2. PROCESSING / LINE

- Input/ Output
- Facility system
- Professional Service

3. PRODUCTS

- HR/PO/CR
- GI/EGI/GA/PPGI
- Special steel
- STS/AL
- Round Bar (New)

4. QUALITY ASSURANCE

5. CUSTOMERS

QUALITY ASSURANCE



Hardness and Tensile Test

Type		Symbol	Tempering degree		Tensile test	Hardness	Bend test	
			Category	Symbol	Tensile strength kgf/mm ²	(Hv)	Bending angle	Inner radius
COLD ROLLED SHEET	Class 1 (for general purpose)	SPCC (SCP1)	Annealing state	A	More than 28	Less than 105	180°	Adherence
			Standard tempering	S	More than 28	Less than 115	180°	Adherence
			1/8 Hardness	1/8H	30-42	95-130	180°	Adherence
			1/4 Hardness	1/4H	38-40	115-150	180°	0.5 of Thickness
			1/2 Hardness	1/2H	45-60	138-185	180°	1.0 of thickness
			Hardness	H	More than 56	More than 170	-	-
	Class 2 (for Processing)	SPCD (SCP2)	Standard/Annealing	SA	More than 28	Less than 110	180°	Adherence
	Class 3 (for Deep processing)	SPCD (SCP3)	Standard/Annealing	SA	More than 28	Less than 110	180°	Adherence

Operation ratio test

Thickness category mm Symbol	KS D 3504		JIS G 3302		ASTM		Tensile test specimen
	0.25-0.40	0.40-0.60	0.60-1.0	1.0-1.6	1.6-2.5	More than 2.5	
SPCC	(More than 32)	(More than 33)	(More than 36)	(More than 37)	(More than 38)	(More than 39)	No. 5, Rolling Direction
SPCD	More than 34	More than 36	More than 38	More than 39	More than 40	More than 41	
SPCE	More than 34	More than 38	More than 40	More than 41	More than 42	More than 43	

Chemical components

Category		Symbol	Chemical components[%]				
			C	Si	Mn	P	S
COLD ROLLED STEEL SHEET	Class 1 (for general purpose)	SPCC(SOP1)	Less than 0.12	-	Less than 0.50	Less than 0.40	Less than 0.045
	Class 2 (for Processing)	SPCD(SOP2)	Less than 0.10	-	Less than 0.45	Less than 0.035	Less than 0.035
	Class 3 (for Deep processing)	SPCE(SOP3)	Less than 0.08	-	Less than 0.40	Less than 0.030	Less than 0.030



1. COMPANY OVERVIEW

- Who we are
- History
- Where we are

2. PROCESSING / LINE

- Input/ Output
- Facility system
- Professional Service

3. PRODUCTS

- HR/PO/CR
- GI/EGI/GA/PPGI
- Special steel
- STS/AL
- Round Bar (New)

4. QUALITY ASSURANCE

5. CUSTOMERS

CUSTOMERS(RELATED)

AUTOMOTIVE PARTS



ELECTRONIC PARTS



OTHER RELATED

